



Intertek Testing Center

340-2, Yongam-ri, Chongryang-myun,
Ulju-gun, Ulsan, 689-865 Korea
Tel : 052-257-6754, Fax : 052-276-6792

TEST REPORT

Applicant : 3M KOREA Ltd.
Address : Yoido P.O Box 93
Seoul, Korea

Page: 1 of 3

Report No. UT07R-0443-002

Date: May. 16, 2007

Sample Description : The following submitted sample(s) said to be:-

Name/Type of Product : 9088
Sample ID No. : UT07R-0443-002
Manufacturer/Vender : 3M KOREA Ltd.

Sample received : May. 11, 2007
Testing Date : May. 11, 2007 ~ May. 15, 2007
Testing Laboratory : Intertek Testing Center
Testing Environment : Temperature : 22 °C Relative Humidity: 51 %

Test Method(s) : Please see the following page(s).
Test Result(s) : Please see the following page(s).

* Note 1 : The test results presented in this report relate only to the object tested.

* Note 2 : This report shall not be reproduced except in full without the written approval of the testing laboratory.

Tested by,

E.Y.Lee / Chemist

Authorized by,

H.W.Yoo / Lab Manager

Intertek Testing Center

This Test Report is issued by the Company subject to its Terms and Conditions of Business printed overleaf. Attention is drawn to the limitations of liability, indemnification and jurisdictional issues defined therein. This Test Report shall not be reproduced, except in full, without prior written consent of the Company.

TEST REPORT

Report No. UT07R-0443-002

Page: 2 of 3
Date: May. 16, 2007

Sample ID No. : UT07R-0443-002
Sample Description : 9088

Test Items	Unit	Test Method	MDL	Results
Cadmium (Cd)	mg/kg	With reference to US EPA 3052, by acid digestion and determined by ICP-OES	0.5	N.D
Lead (Pb)	mg/kg	With reference to US EPA 3052, by acid digestion and determined by ICP-OES	5	N.D
Mercury (Hg)	mg/kg	With reference to US EPA 3052, by acid digestion and determined by ICP-OES	2	N.D
Hexavalent Chromium (Cr ⁶⁺)	mg/kg	US EPA 3060A and determined by UV-visible	1	N.D
Polybrominated Biphenyl (PBBs)				
Monobromobiphenyl	mg/kg	With reference to US EPA 3540C, by solvent extraction and determined by GC/MS Analysis	5	N.D
Dibromobiphenyl	mg/kg		5	N.D
Tribromobiphenyl	mg/kg		5	N.D
Tetrabromobiphenyl	mg/kg		5	N.D
Pentabromobiphenyl	mg/kg		5	N.D
Hexabromobiphenyl	mg/kg		5	N.D
Heptabromobiphenyl	mg/kg		5	N.D
Octabromobiphenyl	mg/kg		5	N.D
Nonabromobiphenyl	mg/kg		5	N.D
Decabromobiphenyl	mg/kg		5	N.D
Polybrominated Diphenyl Ether (PBDEs)				
Monobromodiphenyl ether	mg/kg	With reference to US EPA 3540C, by solvent extraction and determined by GC/MS Analysis	5	N.D
Dibromodiphenyl ether	mg/kg		5	N.D
Tribromodiphenyl ether	mg/kg		5	N.D
Tetrabromodiphenyl ether	mg/kg		5	N.D
Pentabromodiphenyl ether	mg/kg		5	N.D
Hexabromodiphenyl ether	mg/kg		5	N.D
Heptabromodiphenyl ether	mg/kg		5	N.D
Octabromodiphenyl ether	mg/kg		5	N.D
Nonabromodiphenyl ether	mg/kg		5	N.D
Decabromodiphenyl ether	mg/kg		5	N.D

Notes : mg/kg = ppm = parts per million
 < = Less than
 N.D = Not detected (<MDL)
 MDL = Method detection limit

TEST REPORT

Report No. UT07R-0443-002

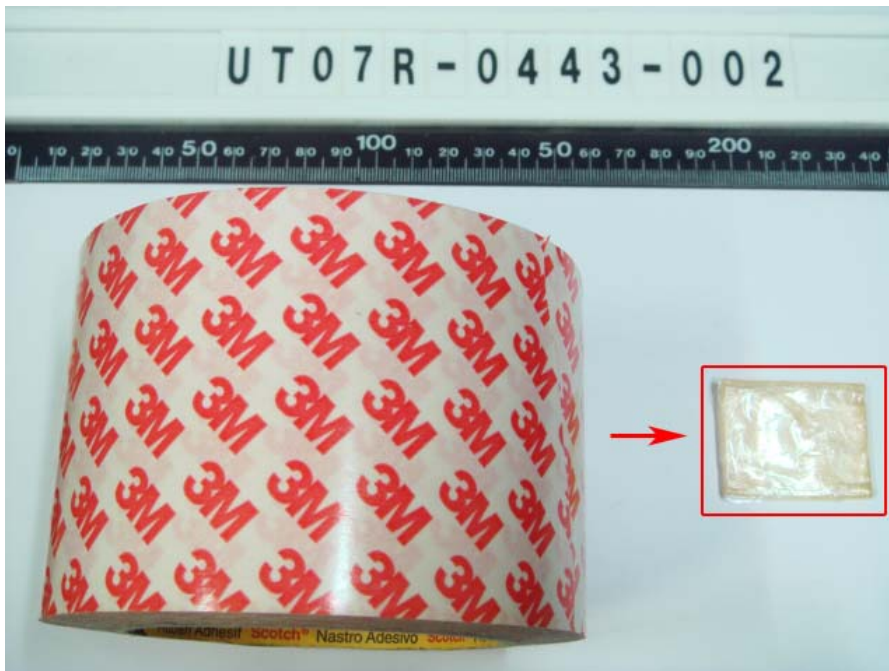
Page: 3 of 3

Date: May, 16, 2007

Sample ID No. : UT07R-0443-002

Sample Description : 9088

* View of sample as received;-



***** End of Report *****